

Licence Manager



User Guide

Copyright © 2014 Dassault Systèmes GEOVIA Inc.

All rights reserved. Dassault Systèmes GEOVIA Inc. publishes this documentation for the sole use of GEOVIA product licensees.

Without written permission, you may not sell, reproduce, store in a retrieval system, or transmit any part of this documentation. For such permission, or to obtain extra copies please contact your local GEOVIA office, or visit www.3ds.com/GEOVIA.

This software and documentation is proprietary to Dassault Systèmes GEOVIA Inc. and, except where expressly provided otherwise, does not form part of any contract. Changes may be made in products or services at any time without notice.

While every precaution has been taken in the preparation of this manual, neither the authors nor GEOVIA assumes responsibility for errors or omissions. Neither will be held liable for any damages caused or alleged to be caused from the use of the information contained herein.

Dassault Systèmes GEOVIA Inc. offers complete 3D software tools that let you create, simulate, publish, and manage your data.

GEOVIA, the GEOVIA logo, combinations thereof, and GEMS, Surpac, Minex, MineSched, Whittle, PCBC, InSite, and Hub are either trademarks or registered trademarks of Dassault Systèmes or its subsidiaries in the US and/or other countries.

Product

Geovia Licence Manager™ 14.6

Last modified: Thursday, 1 May 2014

Table of Contents

Introduction	4
Overview	4
Requirements	6
Workflow	6
Setting up the Licence Manager Server	7
Downloading Licence Manager Installer	7
Download the Licence Manager Installer	7
Upgrading Licence Manager	8
Installing Licence Manager	8
Adding and updating tokens	10
Adding or updating tokens using self-service licensing	10
Adding or updating tokens using UDT file (manual method)	13
Adding or updating tokens from a text file	15
Changing a token class	18
Reporting	19
Report on licence classes	19
Report on licences used	20
Report on licences available	21
Setting up the Client (Surpac, Minex, Whittle, or GEMS) to use a Network Licence	23
Set Up Surpac or Minex to Use the Licence Server	23
Set Up GEMS to Use the Licence Server	24
Reacquire Your Licence	25
Licence classes	32

Introduction

Overview

Gemcom Licence Manager, which is abbreviated to **Licence Manager** in this documentation, provides a flexible licensing solution which enables a nominated person to administer the licences for GEOVIA software products.

Licence Manager permits an administrator to:

- manage the use of various GEOVIA software products.
- produce reports on the usage of various classes of licences.
- produce reports on the usage of functions within GEOVIA software.
- revoke and grant licences for specified users.
- start and stop the licence server.

The **Licence Manager** displays the contents of the licence tokens file in two panes.

The left pane has an expanding and collapsing view of the tokens file. It contains one line for each host (either the host ID or the sentinel number is displayed) with a +/- icon for expansion or collapse.

- Selecting the + icon to expand a host shows which products are enabled for that host.
- Selecting the + icon to expand a product shows which versions of the product are enabled.
- Selecting the + icon for a product version shows which licence classes are available for that version of the product.

The right pane displays details decoded from the licence token. The information displayed in this window includes:

- The licence token. This is a 16 or 24+ digit hexadecimal number which is obtained from GEOVIA.
- The expiry date.
- The maximum number of permitted concurrent users.
- The modules that are enabled.

Licence Manager Privileges

To execute a task, you must have the appropriate privilege.

In a large installation with many licences, it is inadvisable to make a full range of Licence Manager functions available to every user. If every user did have full access, every user would be able to start and stop the licence server and to revoke licences. Consequently, it would be very difficult to administer the licences.

Therefore, you must have Administration privileges to execute the **Install** and **Uninstall** commands.

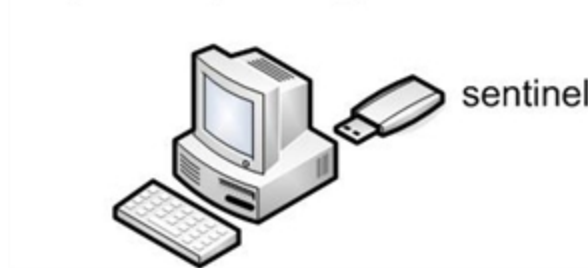
Ideally, only a few responsible people should have the privilege to execute Licence Manager tasks. This ensures that it will be used responsibly, effectively and without unauthorised changes being made to the **Licence Manager** server process.

Licence types

You must obtain a licence to use any GEOVIA software. The types of licence that are available are:

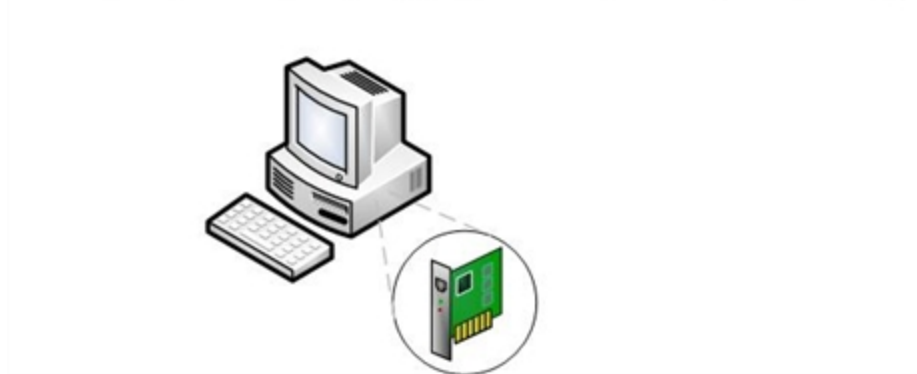
- A single-user licence that requires a GEOVIA sentinel driver to be installed on your computer. This is also known as a roaming licence. For this type of licence, you use a token number that you can only use when that specific sentinel or dongle is attached.

Single-user (roaming) licence

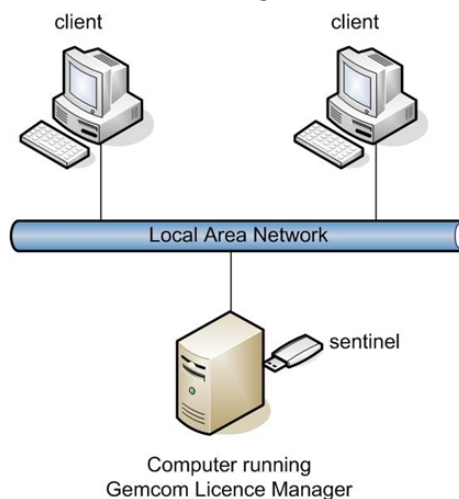


- A demonstration licence that requires no sentinel, but has reduced functionality.
- (GEMS only) A single-user standalone licence associated with the Media Access Control (MAC) address of the network adapter in your computer.

Standalone licence tied to a MAC address (GEMS only)



- A network licence for which you need Licence Manager installed and running on a computer on the local area network (LAN). The machine running the Licence Manager must have a sentinel or dongle attached, but any other machine on that network can run GEOVIA products without the sentinel or dongle, and have fully licensed functionality.



Requirements

You can use an installation 'wizard' to install the **Licence Manager**. You do not have to change any of the settings in the wizard unless this procedure explicitly states that you should.

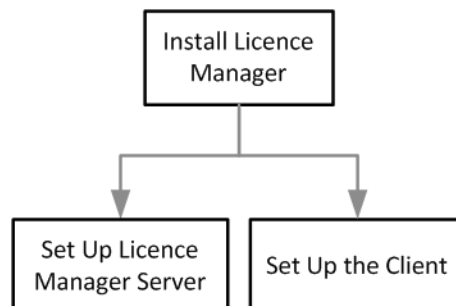
To use GEOVIA *network* licences, the **Licence Manager** must be installed on one computer on the LAN. However, sometimes a network administrator (a person responsible for network administration) might choose to have more than one licence server for backup purposes, such as in the case of a machine malfunction or network outage on a large network. The Licence Manager must be installed on any machine that the network administrator might wish to use as a server.


 **Note:** Each machine can run only one instance of Licence Manager.

Installation Prerequisites

- Administrator edit rights on the computer.
- A current parallel or USB sentinel.
- Windows XP, Windows Vista, Windows 7, Windows Server 2003, Windows Server 2008 (32-bit and 64 bit) operating system.
- All computers in the network **MUST** have the TCP/IP networking protocol installed. If this is not the case then you **must** install this networking protocol before proceeding. Double-click the **Network** icon in the **Control Panel** to install TCP/IP.
- The licence server must have a static IP address. That is, it must not have its IP address dynamically allocated using DHCP. Symptoms of using dynamic IP addresses are: failure for a client to locate a licence server, excessive delays in the licence server responding to and granting licence requests, and inexplicable loss of licences while using the client.
- The network must have either:
 - a fully functional DNS server to permit the translation from host names to IP addresses.
 - an entry in the **hosts** file of each computer in the network that defines the host name and IP address for each computer in the network.
- Install the sentinel and sentinel driver software.
- Install the Licence Manager software on the licence server computer.
- Configure the Licence Manager software on the licence server computer, using the Licence Manager Control Panel.
- Install and configure the GEOVIA client application (for example GEMS, Minex, Whittle, or Surpac) on computers in the network.

Workflow




 **Note:** The workflow shown here is not intended to be complete in scope, but shows the workflow needed to achieve a result.

Setting up the Licence Manager Server

This procedure is the overview of how to set up the Licence Manager Server.


The Licence Manager installation file is available on your GEOVIA installation disc. Alternatively you can download it from the GEOVIA Support website (See See "Downloading Licence Manager Installer" on page 7).

1. Install Licence Manager from the installation disc or from the file you downloaded (see See "Installing Licence Manager" on page 8).
2. Disable the service, add or update the tokens (by UDT file or text file), and enable the service again. This is fully described in:
 - See "Adding or updating tokens using self-service licensing" on page 10
 - See "Adding or updating tokens from a text file" on page 15.

 **Note:** After you have set up the server (and started the service), the licence server automatically distributes licences on your network. See See "Setting up the Client (Surpac, Minex, Whittle, or GEMS) to use a Network Licence" on page 23 for help about making a client computer receive a licence.

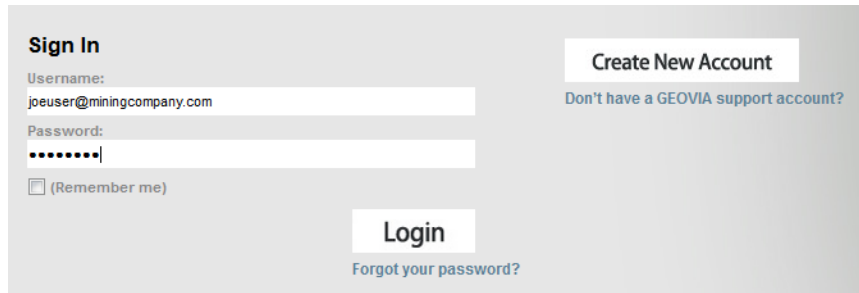
Downloading Licence Manager Installer


Licence Manager is available on every installation disk. Alternatively, you can download the **Licence Manager Installer**.

 **Note:** It is recommended that you install the latest version of Licence Manager when you upgrade your program. If you choose not to install the latest version, you will not see the new modules that apply to your program.

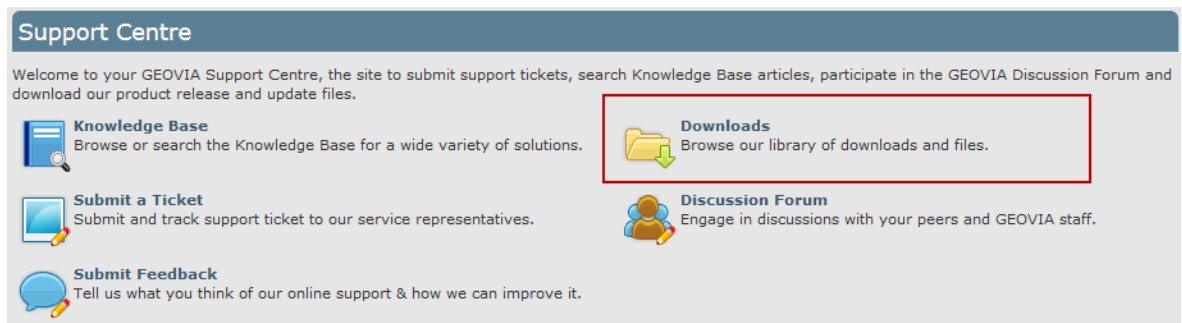
Download the Licence Manager Installer

1. Type <https://www.GEOVIAsupport.com> into the web browser, and press ENTER.
2. If you have a user name and password, enter them and click **Login**.

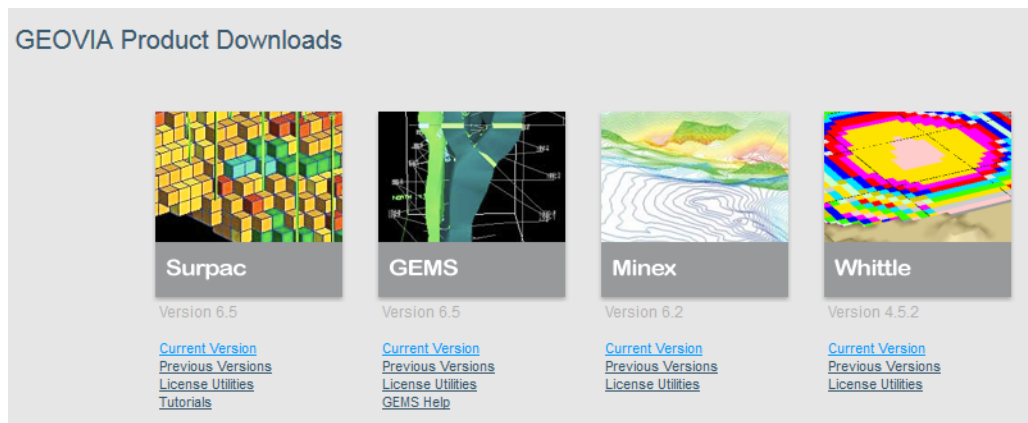


 **Note:** If you do not have any login credentials, click **Create New Account** and follow the prompts.

3. Click **Downloads**.



- Below **Surpac**, **GEMS**, **Minex**, or **Whittle**, click **License Utilities**.



- To save the installer to your computer, click the latest version of Licence Manager.



Note: For Minex, the name of the Licence Manager download link is SSILM. For Surpac it is GEOVIA Licence Manager. For GEMS it is GEMS License Manager. For Whittle it is GEOVIA Licence Manager. You require version 14.0 or newer.

- Using Windows Explorer, navigate to the folder where the **Licence Manager** Installer is saved.
- To run the installer, double-click the file, and follow the prompts.

Upgrading Licence Manager

You do not need to uninstall any existing version of Licence Manager (LM).


- Run the Licence Manager setup program from the installation disc.
- Install LM to the default location.
The previous version is automatically removed regardless of the installation folder of each version.
All the licences from the previous LM are loaded into the new LM.

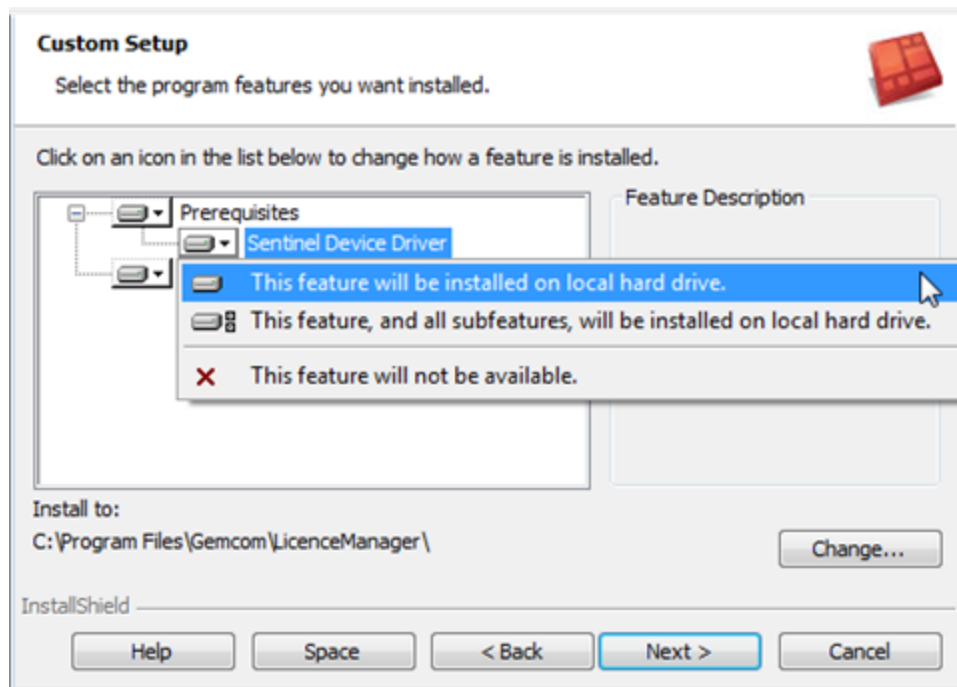
Installing Licence Manager

The installation prerequisites are listed in the Requirements section (see See "Requirements" on page 6).

The **User Defaults** folder holds user settings and customised files. When you install Licence Manager, you can choose the location of the **User Defaults** folder. Unless you specify otherwise, the location is as follows.

Operating system	User Defaults location
Windows XP	C:\Documents and Settings\All Users\Gemcom\LicenceManager\share
Windows 7, Vista, Windows Server 2008	C:\Users\Public\Gemcom\LicenceManager\share

1. Remove the sentinel from the computer if it is plugged in.
 -  **Caution:** It is essential that the sentinel is not plugged in when you install the sentinel driver. Data stored on the sentinel could be erased.
2. Insert the installation disc for the GEOVIA product into the computer's disc drive.
3. Run the Licence Manager installation file.
 - **Surpac** - Click **Install**, click **Utilities**, and then click **Licence Manager**
4. Continue clicking **Next** in the wizard, making the following changes:
 - Accept the terms of the licence agreement.
 - If you are prompted for a seat number, enter the seat number that GEOVIA provided.
 - On the Custom Setup page, set **Sentinel Device Driver** to be installed on the hard drive.



5. Click **Install** when the **Install** button becomes available.
6. Click **Finish** at the final page of the wizard.

An icon similar to the following appears on the desktop. You can use this to start **Licence Manager**.



Adding and updating tokens

You make licences available by adding tokens to Licence Manager. You can copy and paste the tokens you have purchased from a html file or an update **.udt** file. If there are any defined classes, the classes are not changed or deleted when the tokens are updated.

Note: You can be logged in remotely to add a new token or to update an existing one. However, your sentinel must be plugged in to the computer running Licence Manager.

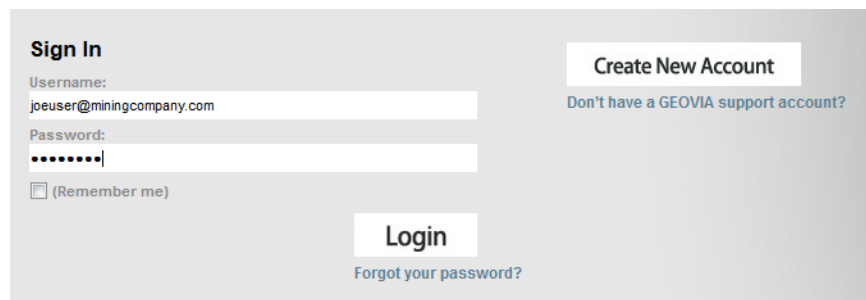
Adding or updating tokens using self-service licensing

Gemcom Licence Manager 14.0 and later versions have the 'self-service licensing' feature. This feature allows you to download all the network licences your company has purchased, as a single **.udt** file, from GEOVIA Support .

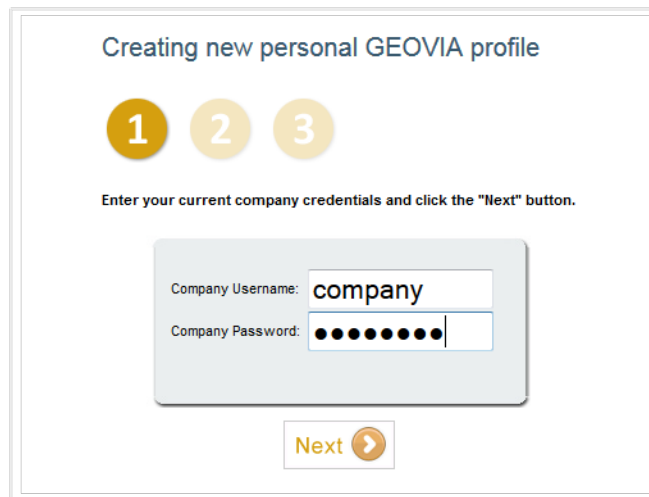
To use self-service licensing, you must have a GEOVIA dongle (also called a sentinel), and a GEOVIA Support account. To create this account you need to know your *company username* and *company password*.

Note: If you need help, or do not know your company user name and company password, email GEOVIA.Login-Support@3ds.com. Please supply your sentinel number or seat number.

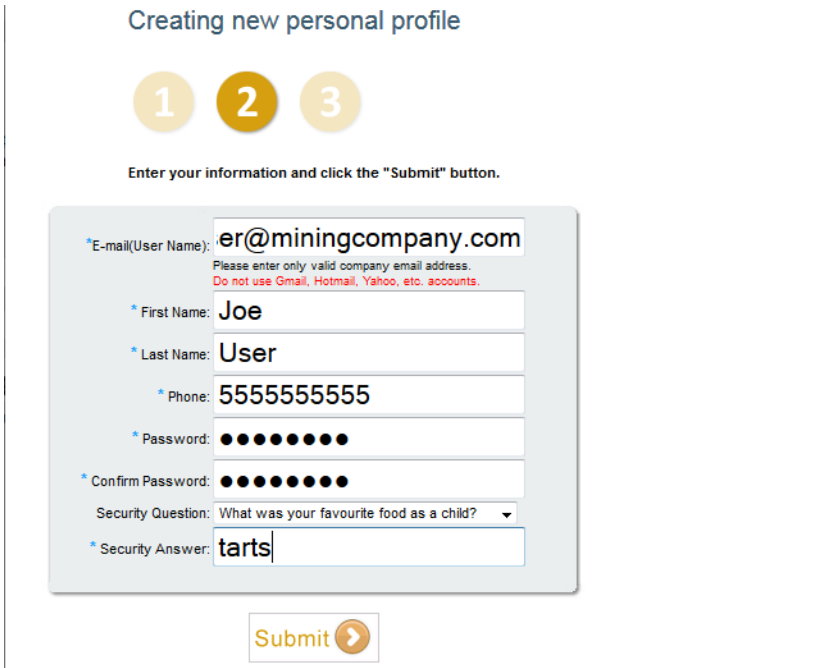
1. If you do not already have a profile at GEOVIAsupport.com, create one by doing the following steps:
 - a. In your Web browser, browse to www.GEOVIAsupport.com.



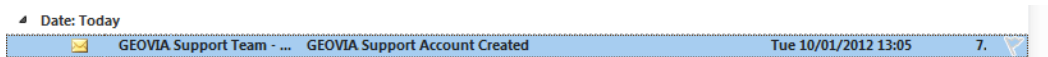
- b. Click **Create New Account**.



- c. Enter your company username and company password, and click **Next**.



- d. Enter the email address you use at your company to ensure continuity of service, and your other details, and then click **Submit**. An email is sent to the email address you specified.



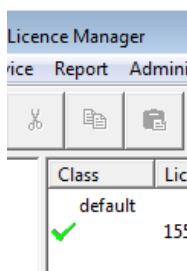
- e. In the email, click the hyperlink to activate your account. You must activate the account within one hour, otherwise the account will expire.

2. Insert the GEOVIA sentinel into a (USB or parallel) port on the computer.

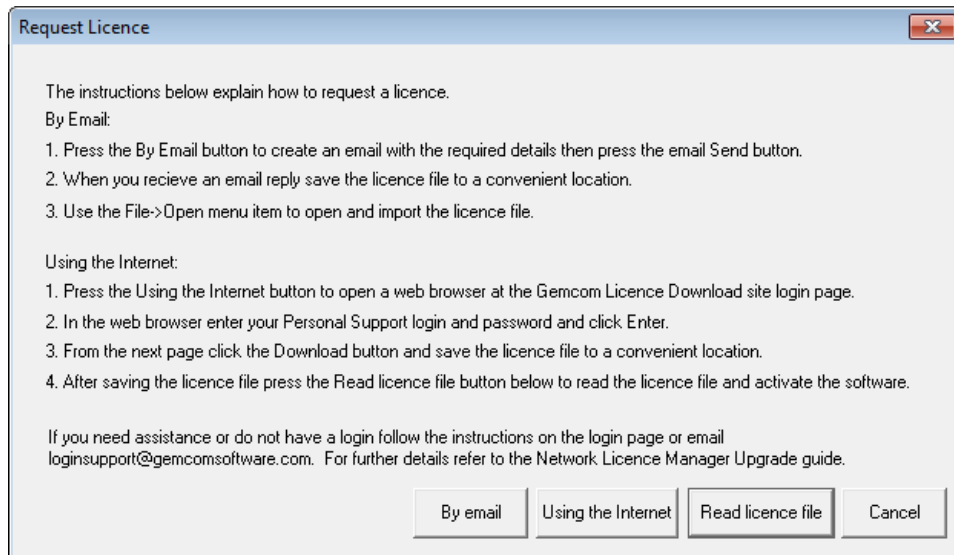
Caution: If you have a parallel sentinel, and there is a printer connected to the parallel port, turn the printer on. Do not connect backup tape units, zip drives, or other such devices to a parallel sentinel. If you need to use such a device, first remove the parallel sentinel. Devices such as these can damage the sentinel. Any sentinel damaged by such actions will incur a replacement cost.

3. Start Gemcom Licence Manager.

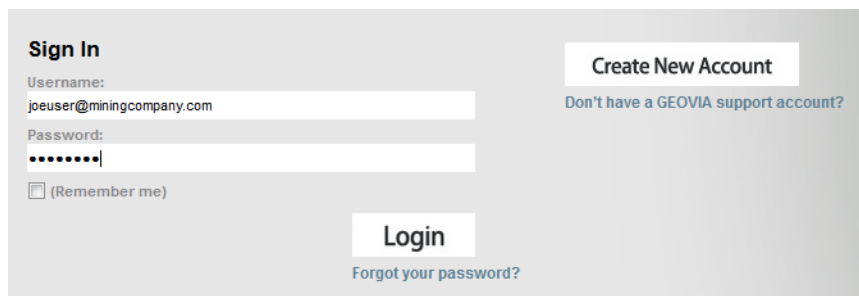
If Licence Manager has no tokens, the *Request Licence* form is displayed, and your web browser displays the login page of the GEOVIA Support website. If Licence Manager has at least one token already, the pane on the right side of Licence Manager shows the token with a green check mark beside it.



4. If the *Request Licence* form is not displayed, select **Administration > Request licence** from the main menu.



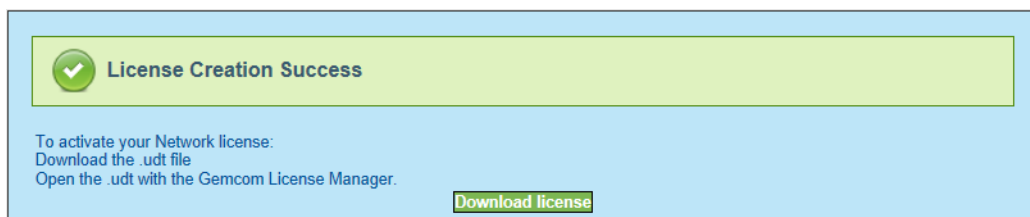
5. Click **Using the Internet**.



Note: If you already have a **.udt** file, you can use **Read licence file**, and you *do not need* to log into the GEOVIA Support website.

Tip: Alternatively, if an email program is installed on the computer, click **By Email** to request a licence by email rather than by automatic download.

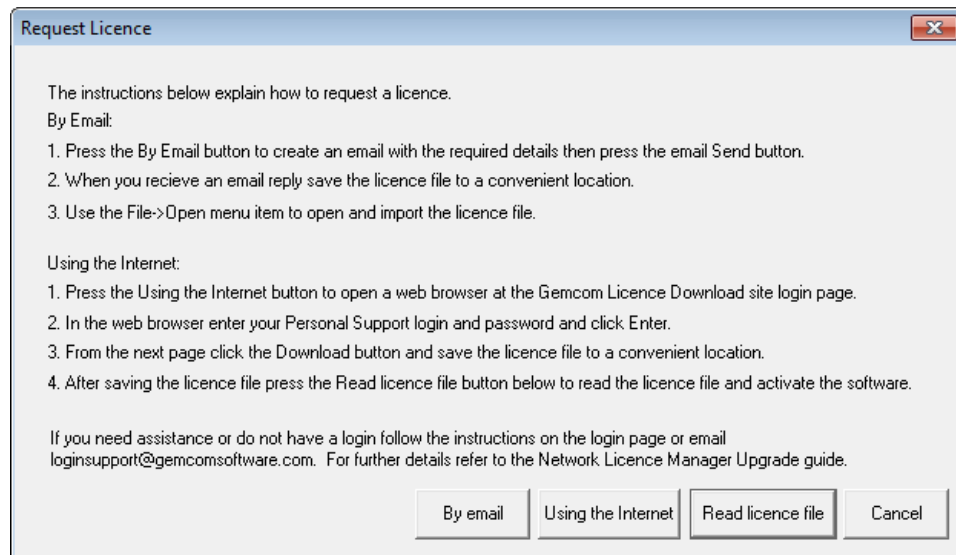
6. In the Web page, enter your GEOVIA Support user name and password, and click **Login**. If you entered a valid user name and password for your company, and your company has at least one network licence, you are prompted to download a **.udt** file.



7. Click **Download**.



8. Click **Save**, and save the **.udt** file to a local folder.
9. In Licence Manager, click **Read licence file**.



10. Browse to the **.udt** file, and click **Open**.
Licence Manager lists the GEOVIA products for which there are licences on the left side. On the right side, Licence Manager displays a green check mark for each licence that is available for the selected product.
11. Choose **Service > Install**, to reinstall the **Licence Manager** service.
12. Choose **Service > Start**, to restart the service.
Licence Manager is now distributing licences across the network.

Adding or updating tokens using UDT file (manual method)

When GEOVIA sends you new licences in the form of a **.udt** file, you can do the following procedure to load the licences into Licence Manager and make them available to the client machines. If there are any previously defined classes in the tokens, the classes are not changed or deleted when the tokens are updated.

When you use a **.udt** file, the chances of a typographical error are minimised.

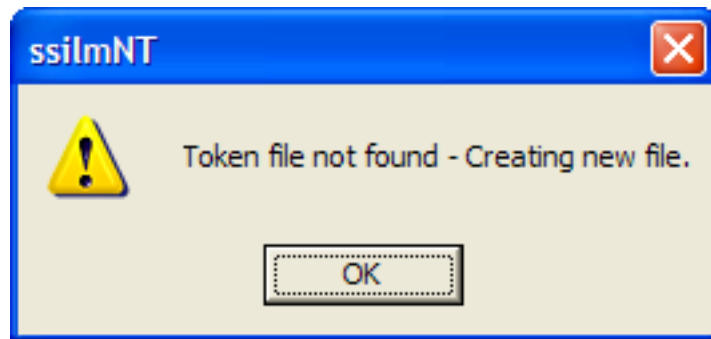
1. As a precautionary measure, back up the previous version of the **.udt** file (if you have one), and store it in a location of your choice.
2. Save the new **.udt** file that GEOVIA supplied to a location on your hard drive.
3. Insert the sentinel into a (USB or parallel) port on the computer.



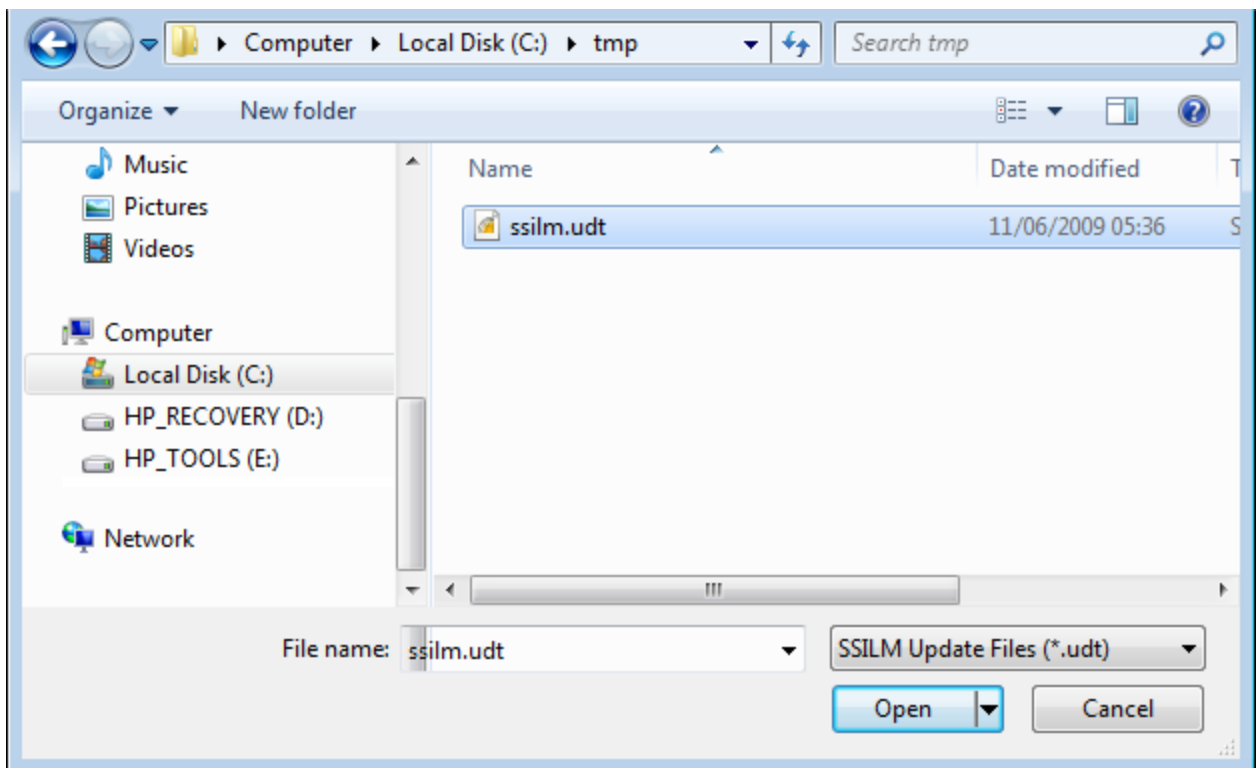
Caution: If you have a parallel sentinel, and there is a printer connected to the parallel port, turn the printer on. Do not connect backup tape units, zip drives, or other such devices to a parallel sentinel. If you need to use such a device, first remove the parallel sentinel. Devices such as these can damage the sentinel. Any sentinel damaged by such actions will incur a replacement cost.

4. Double-click the **Licence Manager** icon.
The **Licence Manager** Control Panel opens.

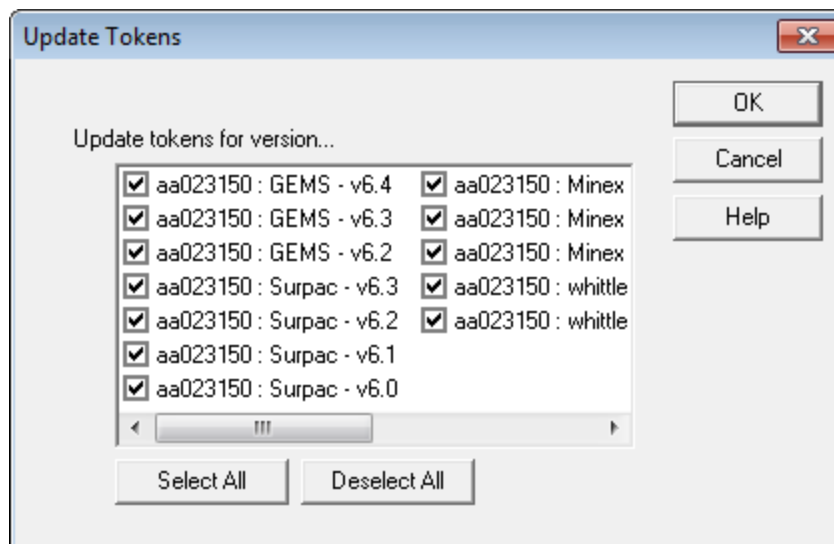
The first time you start **Licence Manager** the following message is displayed. This message is informative only and there is no need to take any action.



5. Click **Service > Stop**.
6. Click **Service > Uninstall**.
7. Choose **File > Open**.
8. Select **SSILM Update Files** in the **Files of type** field, and browse the folders to select the new update file (**.udt**).



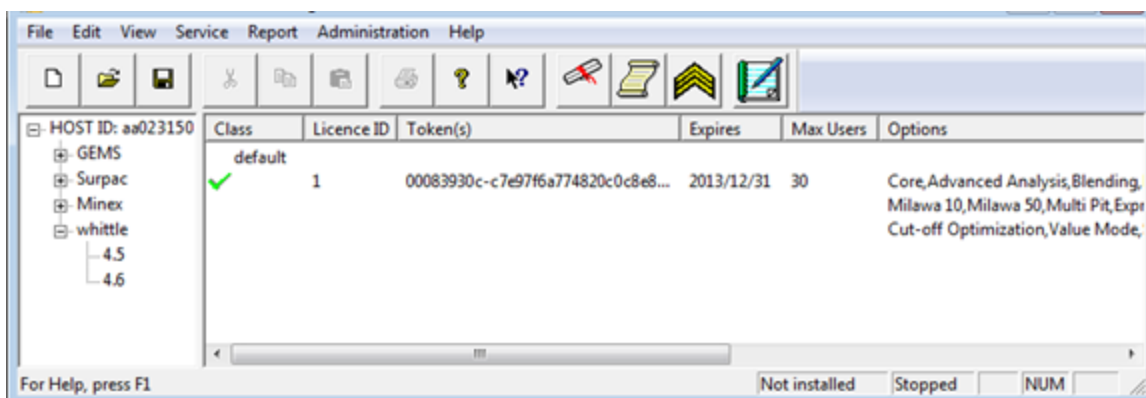
9. Click **Open** to display the *Update Tokens* form.
The form displays a list of tokens, products and versions contained in the update file. You can select the versions you want to add or update.



Select the options on the left to match the tokens required. If the tokens in a particular version of a product already exist, the software will automatically update the tokens to the new tokens. If they do not exist, they will be added as "**default**" class, to the list of available tokens in **Licence Manager**.

10. Click **OK**.

The **Licence Manager Control Panel** is updated with new token information.



If there is a class structure already defined, all existing tokens being updated will be updated in their current classes. All new tokens will be added to the class names as defined in the update file, in most cases this will be the "**default**" class.

11. Choose **Service > Install**, to reinstall the **Licence Manager** service.

12. Choose **Service > Start**, to restart the service.


The Licence Manager is now distributing licences across the network.

Adding or updating tokens from a text file

Contact your local support office <https://www.GEOVIAsupport.com> to obtain written token update information.

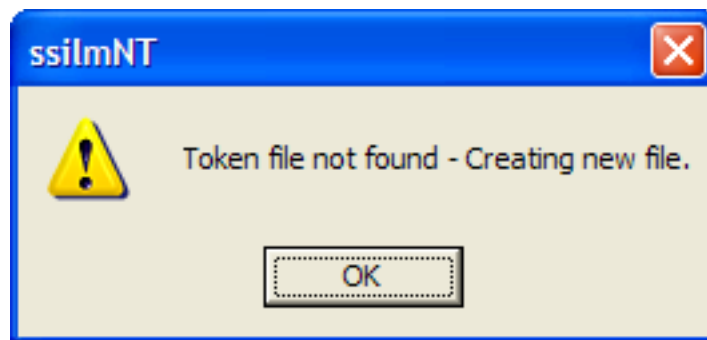
You can copy and paste tokens from a html file for any or all of the tokens which have been purchased. If there are any defined classes in your tokens, the classes are not changed or deleted when the tokens are updated.

1. As a precautionary measure, use **Report > Classes** to print out a summary of the current classes if there are any. Refer to section See "Report on licence classes" on page 19 for more information.
2. Insert the sentinel into a (USB or parallel) port on the computer.

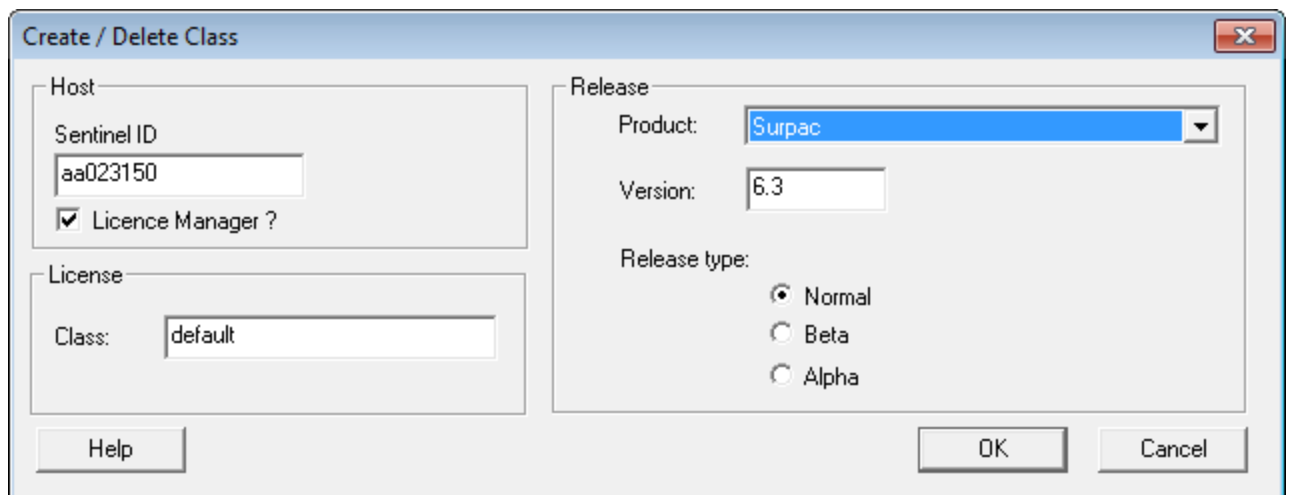
 **Caution:** If you have a parallel sentinel, and there is a printer connected to the parallel port, turn the printer on. Do not connect backup tape units, zip drives, or other such devices to a parallel sentinel. If you need to use such a device, first remove the parallel sentinel. Devices such as these can damage the sentinel. Any sentinel damaged by such actions will incur a replacement cost.





3. Double-click the **Licence Manager** icon.
The **Licence Manager** Control Panel opens.


The first time you start **Licence Manager** the following message is displayed. This message is informative only and there is no need to take any action.

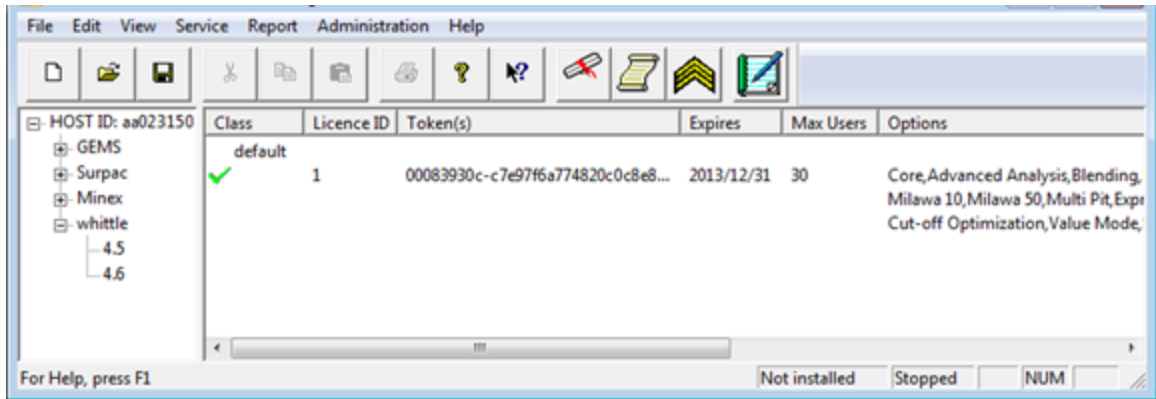


4. Click **Service > Stop**.
5. Click **Service > Uninstall**.
6. Choose **Edit > New Class**.

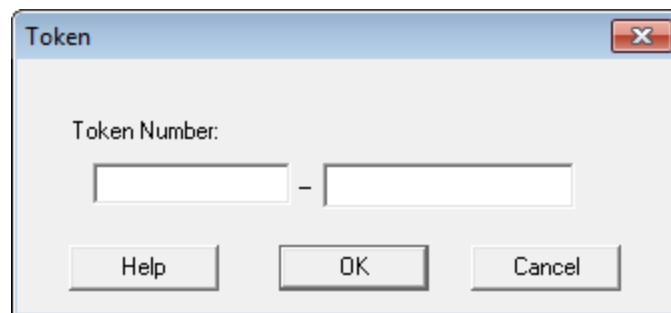


Form feature	Description
Host	
Sentinel ID	The number of the sentinel which is connected to the computer on which the licence server is running. This value MUST not be changed. Advanced administrators that have multiple licence servers may find this field useful because it is possible to enter the sentinel number of a sentinel other than the one connected to the licence server computer so that details of classes and tokens for a second licence server can be entered into the one token file. This token file can then be used by both licence servers, which will be running on different computers.
Licence Man	Do not change the setting of this field. It must be selected.
License	
Class	The name of the new licence class that you are creating. The name default is provided as a convenience. You can choose any name that you like. Conventional usage has shown that it is common to choose licence class names that match departmental usage of the software. For example, geology, survey, engineering are common names. Do not have spaces in the class names. It is useful in large installations to spread the available licences across departments so that no department can utilise all the available licences.  Note: For Surpac and Minex, you can modify the application shortcut to request a licence from a specific class by adding <code>-class classname</code> , where <code>classname</code> in this case is the name of the class from which the licence is being requested. Refer to topic Licence Classes for more information. To create multiple licence classes contact GEOVIA.
Release	
Product	The product name for which the new class is being created.  Note: This product name must match the name of the product for which the token has been generated.
Version	The version number, in the form <code>major.minor</code> , for which the new licence class is being created.  Note: The version number is the version number of the product (for example Surpac, Minex, Whittle, or GEMS) for which the token was generated. It is not the version of Licence Manager.
Release type	The release type for the new licence class.  Note: The release type must match that for which the licence was generated.

7. Select the new **Product** and **Version** number.
8. Leave **Release Type** set to Normal.
9. Leave **Class** set to default unless you are setting up different licences for different groups of users in which case enter the class to allocate the token number to.
 **Note:** Refer to section See "Licence classes" on page 32 for more information.
10. Click **OK**.
 The **Licence Manager Control Panel** is updated with new token information.



11. Choose **Edit > New Token**.



12. Enter the new token number provided by GEOVIA.
Note: Unlike tokens for any other GEOVIA software, a token for **Licence Manager** has at least 24 digits in total. For example, 191e86aa89-744a8c9e8c1b363e
13. Click **OK**.
14. Choose **File > Save**, to save the token settings.
15. Choose **Service > Install**, to install the **Licence Manager**.
 The server status in the status bar changes to *Installed*.
16. Click **OK**.
17. Choose **Service > Start**, to start the service.
 The server status in the status bar changes to *Started*. In addition, the service will automatically start when the computer starts.
18. Click **OK**.

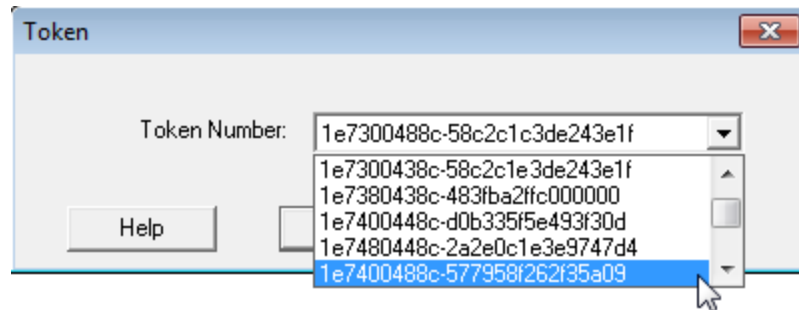
The **Licence Manager** is now distributing licences across the network.

Changing a token class

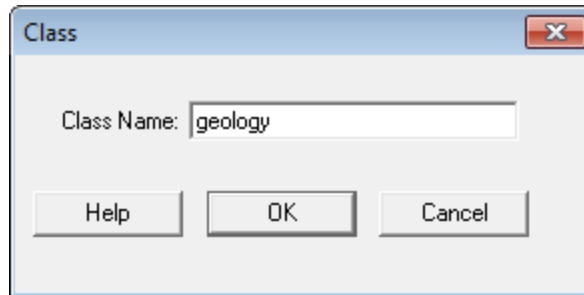
If you need to allocate a different class to a token do the following steps.

1. Start **Licence Manager**.
2. Choose **Edit > Change Token Class**.

3. Select the Token Number for reclassification.



4. Click **OK**.



5. Enter the name of the new class.
6. Click **OK**.
7. Choose **File > Save** to save the changes to the tokens file.

Reporting

You can manage **Licence Manager** using reports which provide usage statistics of licences currently in use and currently available.

You can use the **Licences** report to determine which users hold which licence.

Licence Manager generates the reports by sending requests for information to the licence server process. The server process then responds by sending the requested information to the **Licence Manager** which then displays it in a dialog window.

Network traffic can have an impact on the time to send and receive this information. It may take a few seconds to collate all of the report data.

All of the following log functions broadcast the log report on the local network, so that all Licence Managers running within the limits of the broadcast (local network) will send a reply. If there are two (or more) Licence Managers running on a network, a complete report of all classes, licences and available licences is available from all Licence Managers. This is useful in diagnosing if all of your Licence Managers are working correctly.

Report on licence classes

- Choose **Report > Classes** to display a report of the various classes of licences defined in the tokens file currently being used by the **Licence Manager**.
 - 📌 **Note:** This report might take a few moments to query the Licence Manager server before the report is displayed.
- The report is displayed. Use the scrollbars to view the entire report.

The report includes details, for each licence class which has been defined, of the number of licences currently in use and the number of licences currently available in that class.

An example of the licence class report is displayed.

```

Collecting report(s); please wait ...
Report from server VAN-CVACALARES]
Licence Manager Server Version 14.4
Dump of licence tokens
Product      Release    Class     ID      Expires   Max Users  Users  Enabled
-----
Surpac       6.4       default  1       2013/09/30  12         0      yes
Options: Core Modules, Drill Hole Database, Block Modelling, Pit and Dump Design
Solids Modelling, U/G Sections, String Reports, Grade Calculations
Surface & U/G Surveying, Autoplot, Mesh Tools, Dynamic Shells, U/G Ring Design
Drill and Blast, MineSched - Development, MineSched - Production
Geostatistics, Basic Statistics, Standard Plug-ins, Interpolator
Underground Design, Hub, DraftSight Connector, MineSched - Blending
Graphical Sequencer, Road Design


whittle      4.5       S2093801  1       2014/02/28  20         0      yes
Options: Core, Advanced Analysis, Blending, Mining Width, Multiple Child Nodes
Multi Element, Milawa 10, Milawa 50, Multi Pit, Express, Practical Pushbacks
Pushback Chooser, Cut-off Optimization, Value Mode, Simultaneous Optimization

GEMS         6.5       S2093801  1       2014/02/28  20         3      yes
Options: Core, Viewer, Survey, Survey Maps, Volumetrics, Polygons, Surface and Solids Modelling
Pack & Go, Jet Database for GEMS Users, Drillhole Management, Basic Statistics
Geostatistics, Block Modelling, Ore Control, Unwrinkle/Unfold, GDM Strip Log
Short Term Planning, Pit and Dump Design, Surface Blast Design, Go Simulator
Mine Roads, Production Scheduler, Reconciliation Reporting, Long Term Planning
Underground Blast Ring Design, Tunnel Design, Tunnel Viewer, Optech CMS Interface
Drillhole Excavation Warning System (DEWS), PCBC Module in GEMS
Cave Management Module, Footprint Finder, LSQ Grade Management, Schedule Optimization
Daily Operations Tools, Expanded Slice File, Block Caving Base, Internal Services Tools
Internal Development Tools, PCSLC Module in GEMS, Dynamic Shells

Minex        6.2       S2093801  1       2014/02/28  20         0      yes
Options: Core, Borehole Database and Modelling, Fault Modelling, Coal Washability
Open Pit Design and Reserves, Open Pit Earth Works, Open Pit Drill and Blast
Open Pit Surveying, Pit Optimiser, Spoil Reshaper, Open Pit Scheduling
Underground Engineering, Geostatistics, Open Pit Dump Scheduling
Open Pit Haulage Planning
  
```

Report on licences used

1. Choose **Report > Licences** to display a report of the licences usage and being managed by the **Licence Manager**.

 **Note:** This report might take a few moments to query the **Licence Manager** server before the report is displayed.

The report is displayed. Use the scrollbars to view the entire report.

The report includes details, for each licence currently in use:

- The host on which the licence is running
- The user name of the session using that licence
- The product being used
- The version of the program being used
- The class of licence being used
- The Licence ID of the licence being used
- The state of the licence. The **standby** state indicates that the licence is not active. The licence can be reassigned to another user if all licences are currently in use.

An example of the licence usage report is displayed.

```

Collecting report(s); please wait ...
Report from server VAN-CVACALARES
Licence Manager Server Version 14.4
Dump of licences
Licence Host User Product Release Class ID State
239e8850 VAN-CVACAL ui3/15728 Surpac 6.4 default 1 standby
239e884e Van-SGreen SGreen/21488 Surpac 6.4 default 1 standby

Report from server server1.company.priv
Licence Manager Server Version 14.4
Dump of licences
Licence Host User Product Release Class ID State
05b478d5 COMPANY SRyabchins/16992 GEMS 6.6 S2093801 1 Core GEMS
05b478d4 VAN-CLIM CLim/09048 GEMS 6.6 S2093801 1 Core GEMS
05b478ac WIN7X64NP nenadp/11116 GEMS 6.6 S2093823 21920 PRG entries Range GEMS

Report from server Win7x64np
Licence Manager Server Version 14.3
Dump of licences
Licence Host User Product Release Class ID State
52c8013b VAN-CCHENE chrisc/13148 GEMS 6.6 S2518901 1 Tunnel Design GEMS
52c8013a Van-SGreen SGreen/22940 Surpac 6.4 default 1 standby
52c8012f van-Achow1 achow/07344 GEMS 6.6 S2518901 1 Core GEMS
52c8012a P-SQL-STG HChen/08156 GEMS 6.6 S2518901 1 Tunnel Design GEMS
52c80119 Windows7x6 CompanyTest/02532 GEMS 6.6 S2518901 1 Block Modelling GEMS
    
```


The **State** of a licence is reported as either:

- The name of the function being executed.
The name of the function currently executing or which has just completed execution. The licence state will revert to **Idle** within a few seconds of the function being completed.
- Idle
The licence was recently in use but has not been idle long enough to be placed in standby mode. Licences will be changed from “idle” to “standby” after the **Standby Timeout** period defined in the **Edit - Properties** option has been exceeded.
- Standby
A licence in “standby” mode has been inactive for at least the number of seconds defined by the **Standby Timeout** property which can be found in the **Edit > Properties** option.

Licences which are in standby mode are candidates for being revoked when no more licences are available, and a licence is required by a new user.

Report on licences available

1. Choose **Report > Available** to display a report for each licence token. The numbers of licences currently in use and the number of licences still available..

 **Note:** This report might take a few moments to query the **Licence Manager** server before the report is displayed.

The report is displayed. Use the scrollbars to view the entire report.

The report includes details, for each licence token in the tokens file, the number of licences currently in use, and the number of licences currently available.

An example of the licences available report is displayed.

```

Collecting report(s); please wait ...
Report from server VAN-CVACALARES
Licence Manager Server Version 14.4
Dump of licence availability
Product Release Class Max Users Users Standby Available
Surpac 12 2 0 10
Surpac 6.5 12 2 0 10
Surpac 6.5 default 12 2 0 10
Surpac 6.4 12 2 0 10
Surpac 6.4 default 12 2 0 10
Surpac 6.3 12 2 0 10
Surpac 6.3 default 12 2 0 10
Surpac 6.2 12 2 0 10
Surpac 6.2 default 12 2 0 10
Surpac 6.1 12 2 0 10
Surpac 6.1 default 12 2 0 10
    
```

 **Note:** Licences which are listed under **Standby Available** are licences which can be made available for other users.

Setting up the Client (Surpac, Minex, Whittle, or GEMS) to use a Network Licence

Prerequisites: Before you can use a network licence, Gemcom Licence Manager must be installed and running on a computer on your local area network. Surpac, Minex, Whittle, and GEMS will automatically use a network licence if Gemcom Licence Manager is running on the same subnet of your local area network.


You can force a Surpac or Minex computer to use the licence server for licensing by modifying its desktop shortcut using the following format:


<path of the GEOVIA product executable> -lm <name or IP address of the Licence Server>

For example,

```
C:\Program Files\GEOVIA\Surpac\613\nt_i386\bin\surpac2.exe -lm
licserv
```

```
C:\Program Files\GEOVIA\Minex60\bin\minex.exe -lm 192.168.1.56
```

 **Note:** If the Licence Manager is on a different subnet from the client, the client will not automatically receive a licence. Instead you *must* add **-lm <name or IP address of the Licence Server>** to the desktop shortcut.

 **Note:** If there are multiple classes available on the **Licence Manager**, for example survey, engineering and geology, you can also modify the Surpac or Minex desktop shortcut to use these classes.


Set Up Surpac or Minex to Use the Licence Server

1. Install Surpac or Minex on a computer that can contact the **Licence Manager** through the network.

A shortcut appears on the desktop. By default, the product will look for a local sentinel and licence first, and then search for a **Licence Manager** licence. To change this order, the shortcut created on the desktop must be modified.

2. Right-click the (Surpac or Minex) desktop icon, and choose **Properties**.
3. Edit the **Target** field in the following format:

<path of the GEOVIA product executable> -lm <IP address of Licence Server>


 **Note:** For Surpac or Minex, if the network administrator has configured the **Licence Manager** to have class names, the licence class is required in the format **<path of GEOVIA product executable> -lm<IP address of Licence Server> -class <class name>**. For example, **C:\Program Files\GEOVIA\minex60\bin\minex.exe -lm 10.1.5.58 -class geologist**.

4. Click **OK**.

You can change the parameters of the desktop shortcut in the following ways.

Desktop Shortcut

Using the -lm option in this way causes the licence server request to be broadcast to all computers in the network. Depending on the state of the local network and the traffic load in the network, there might be a delay before a licence is granted.

 **Note:** Firewalls on a client or server computer can be set up to block certain broadcast requests and only allow requests when a specific computer has been nominated. In such cases this option will not work.

Multiple servers

If multiple licence servers exist on the network, you can make the (Surpac or Minex) application client search the licence servers in order by adding:

`-lm licenceserver1` to the shortcut.

Reconfigure the Port

Every server 'listens' to the network using a particular port number. The default port for Licence Manager is 1234, but any number in the range of 0 to 65535 can be used. If the server has been configured to use another port, you will use the command `-lm <servername>:<port number>`. For example:

C:\Program Files\GEOVIA\minex60\bin\minex.exe -lm licServer:1235

Specify the Token Class

All licences in a Licence Manager installation are added to a class. This is so that different tokens for the same version of a product can be selected. When Licence Manager is installed all licences have the class named **default**. The person who administers Licence Manager can create additional classes, and can rename or remove the **default** class. For example, the administrator could set up a class called **surveyor**, which includes only the surveying tool tokens, and a class called **geologist**, which includes only the geology tool tokens.

To use the class named **default**, you do not need to add a `-class <classname>` to the desktop shortcut. Simply double-click the program icon on the desktop, select to use a network licence, and the **default** class is automatically selected.


If you require a specific class, or a class named **default** does not exist, you must add a `-class <classname>` to the desktop shortcut so that the licence is granted from the specified class. If you do not specify the class, the licence is not granted.

For example in Surpac:

C:\Program Files\GEOVIA\Surpac\65\x64\bin\surpac.exe -lm licServer -class survey

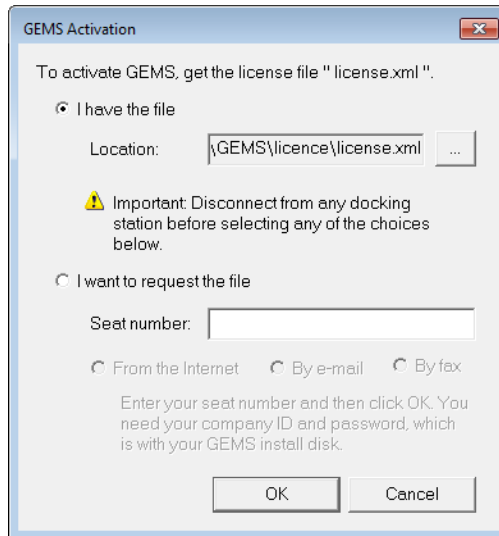
For example in Minex:

C:\Program Files\GEOVIA\minex60\bin\minex.exe -lm licServer -class survey

 **Note:** For Whittle, if the licence tokens were added (in Licence Manager) to a licence class other than the **default** class, you can specify the licence class in the *Network License Request* form.

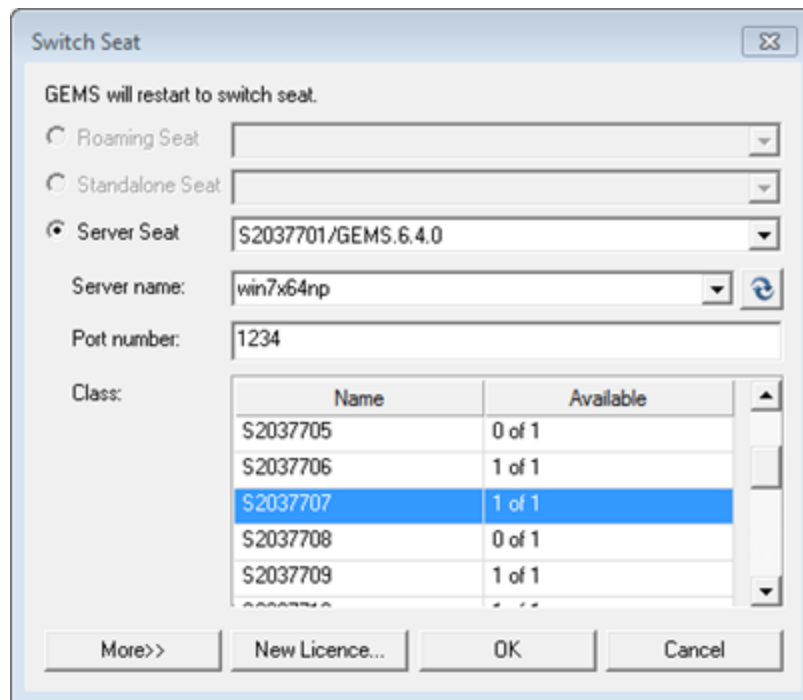
Set Up GEMS to Use the Licence Server

1. Obtain a GEMS licence file (.xml) from GEOVIA, and save it on your computer.
2. Install GEMS on a computer that can contact the **Licence Manager** through the network.
3. Start GEMS.
 - Or if you currently have GEMS running:
 - a. Choose **File > Switch Seat**.
 - b. In the *Switch Seat* form, click **New Licence**.
4. In the *GEMS Activation* form, select **I have the file**, browse for the licence file, and then click **OK**.



Your licence file is copied to the configuration folder, and the *Switch Seat* form appears.

5. In the *Switch Seat* form, select the **Server Seat** and **Server name**, and then click **OK**.



Reacquire Your Licence

You can use the **Update Licence** function to attempt to reacquire a lost or revoked licence.

To reacquire a licence in Surpac:

1. Choose **File > Licencing > Change/Inspect Licence**.

Licence Type none Permits unlicensed use of data viewing functions. No dongle is required.

local A dongle must be plugged into a USB port.

network A licence is requested from a network licence server.

Request a licence from the GEOVIA Support web site

Dongle to license: aa020226

The instructions below explain how to request a licence.

By email:
Press the By email button to create an email with the required details then press the email send button. When you receive an email reply use the Licencing->Change / Inspect licence menu item to enter the licence token.

Using the Internet:
1. Select the dongle to be licensed from the list of attached dongles and press the Using the Internet button to open up a web browser at the GEOVIA Licence Download site login page.
2. In the web browser enter your Personal Support login and password and click Enter.
3. From the next page click the Download button and save the licence file to the c:/users/public/geovia/surpac/66_beta_1_x64/share/etc/ folder.
4. After saving the licence file select local as the Licence Type and press the Apply button to activate the software.

If you need assistance or do not have a login follow the instructions on the browser login page or email loginsupport@geovia.com.

2. Select **network**, and click **Apply**.

The Surpac **Network Licence Request** form is displayed. You can use this form to request a new licence.

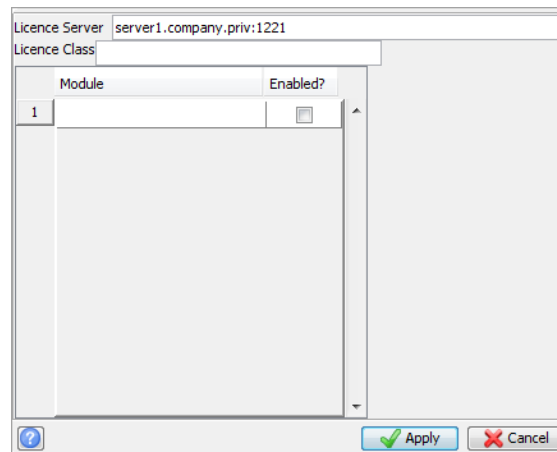
Network Licence Request

Licence Server

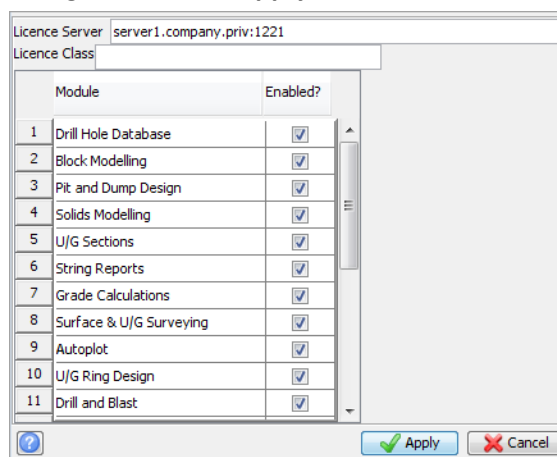
Licence Class

Module	Enabled?
1	<input type="checkbox"/>

3. Edit the **Licence Server** field, for example **server1.company.priv:1221**, and click **Apply**.



4. To check which modules you are now licensed to use, choose **File > Licencing > Change/Inspect Licence** again, and click **Apply**.



To reacquire a licence in Minex:

1. Choose **File > Licencing**.
2. Select **Network**, and click **Ok**.

The screenshot shows a dialog box titled "License Type" and "License Request".

License Type

- None Permits unlicensed use of some data viewing and manipulation functions. No dongle is required
- Local A dongle must be plugged into a USB port
- Network** A licence is requested from a network license server

License Request

Request a license from the GEOVIA Support web site

Dongle to license

The instructions below explain how to request a license/token number.

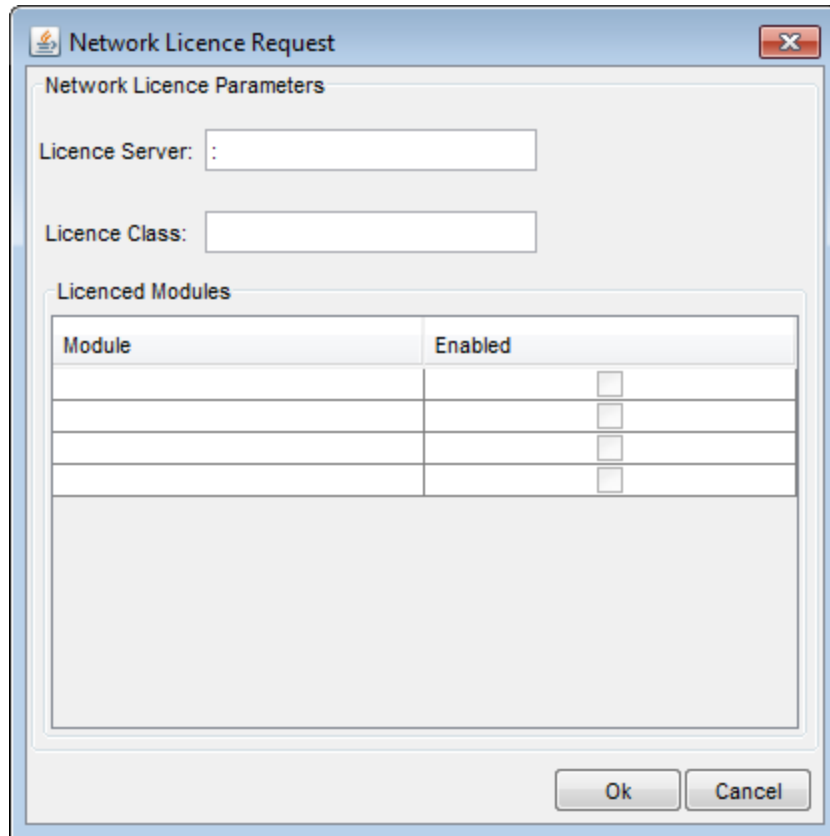
By email:

1. Select the dongle to be licensed from the list of attached dongles, press the By Email button to create an email with the required details and then press the email Send button.
2. When you receive an email reply, check the file received. If a license.dat file has been received, save the license file and press the Import License File button. When prompted, select the file you have downloaded and press OK to activate the software. If a token number has been received, ensure that the "Local" option is selected in the dialog and press OK. Press OK in the Update License Token dialog to activate the software.

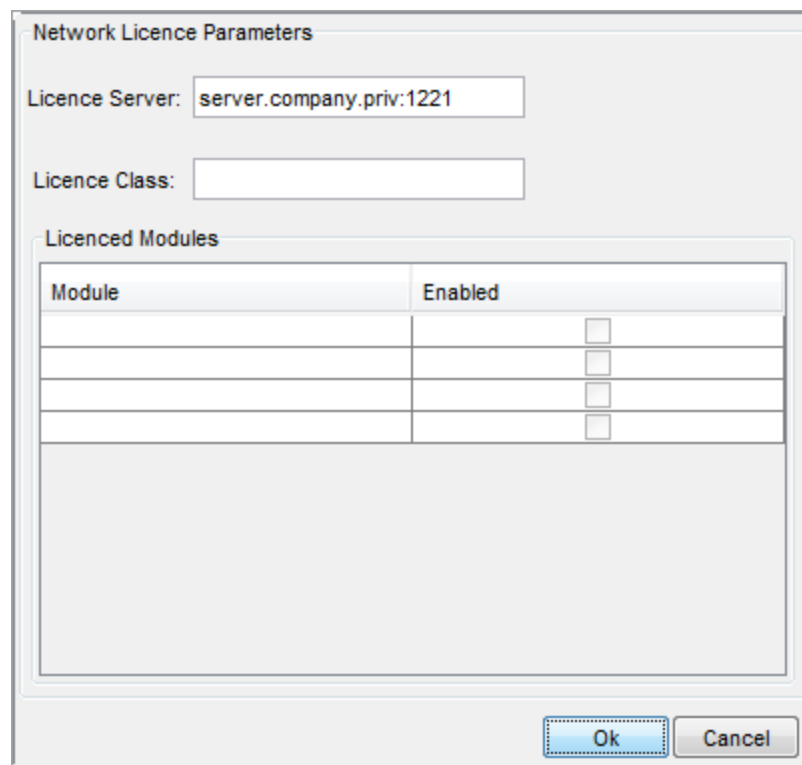
Using the Internet:

1. Select the dongle to be licensed from the list of attached dongles and press the Using the Internet button to open up a web browser at the GEOVIA License Download site login page.
2. In the web browser enter your Personal Support login and password and click Enter.
3. From the next page click the Download button and save the license file in your download folder.

The Minex **Network Licence Request** form is displayed. You can use this form to request a new licence.



3. Edit the **Licence Server** field, for example *server1.company.priv:1221*, and click **Ok**.



You cannot obtain a licence to continue your work if the licence has been revoked, and all available licences have been granted to other users. Functions that permit data to be saved, and do not require a licence will allow the work to be saved.

To reacquire a licence in Whittle:

1. Choose **File > License Validation**.
2. Select **Network**, and click **Ok**.

License:

None Permits unlicensed use of data viewing functions. No dongle is required

Local A dongle must be plugged into a USB port

Dongle to license:

Local license validation

Request a license from a GEOVIA Support portal

Import license

Network A license is requested from a network license server

About Demonstration Usage

A demonstration version of this software is available separately from this licensed version

See www.3ds.com/GEOVIA for details...

The Whittle **Network License Request** form is displayed. You can use this form to request a new licence.

Network License Parameters


License Server:

License Class:

Licensed Modules

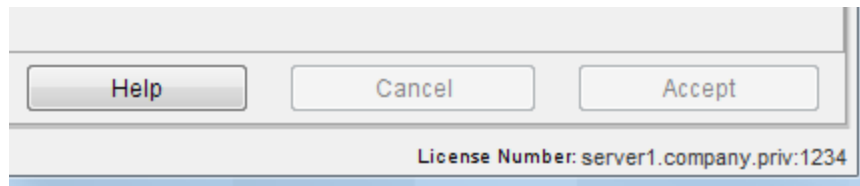
Module	Enabled
Core	<input checked="" type="checkbox"/>

3. Enter the name, or IPv4 address, of your network licence server in the **License Server** field, for example ***server1.company.priv***.

 **Tip:** If you do not receive a network licence, try specifying the TCP port, for example ***server1.company.priv:1234***.

4. Click **Validate**.

The lower right corner of Whittle shows you that you have been granted a licence and displays the name of the licence server.



You cannot obtain a licence to continue your work if the licence has been revoked, and all available licences have been granted to other users. Functions that permit data to be saved, and do not require a licence will allow the work to be saved.

To reacquire a network licence in GEMS:

1. Choose **File > Switch Seat**.

The **Switch Seat** form appears. You can use this form to request a new licence.

The screenshot shows the 'Switch Seat' dialog box. At the top, it states 'GEMS will restart to switch seat.' Below this are three radio buttons: 'Roaming Seat', 'Standalone Seat', and 'Server Seat'. The 'Server Seat' option is selected. To the right of these buttons are three dropdown menus. The 'Server Seat' dropdown is open, showing 'S2037701/GEMS.6.4.0'. Below these are fields for 'Server name:' (win7x64np), 'Port number:' (1234), and 'Class:'. The 'Class:' field contains a table with the following data:

Name	Available
S2037705	0 of 1
S2037706	1 of 1
S2037707	1 of 1
S2037708	0 of 1
S2037709	1 of 1

At the bottom of the dialog are four buttons: 'More>>', 'New Licence...', 'OK', and 'Cancel'.

2. Select the licence server from the **Server Seat** list, and click **OK**.

You cannot obtain a licence to continue your work if the licence has been revoked, and all available licences have been granted to other users. Functions that permit data to be saved, and do not require a licence will allow the work to be saved.

Note: If you have a standalone licence linked to a specific computer, use the **Remove Seat** utility to revoke the licence from that computer permanently. Then, on the new computer where you will assign the licence, use the **Save Host ID** utility to assign the licence.

Licence classes

For a given version of Surpac, Whittle, or Minex, you can set up different licence classes for the situation where that product has one set of options or modules enabled for one group of users, and a second set for a second group of users.

For example, two Surpac version 6.1 licence classes could exist, one with options suitable for geologists and the other with options suitable for surveyors.

In order to request a specific licence class, you can add the `-class` command line option to the desktop shortcut of the Surpac or Minex executable. For Whittle, you can specify the licence class in the **Network License Request** form. If the licence class is not specified then a **default** licence class is used.

If your site does not use multiple licence classes, you can use the **default** class.

The advantage of using licence classes on large sites is to reduce the overall cost of the software by purchasing appropriate software modules for various classes of users.

Licence class names are user defined and can be any combination of alphanumeric characters.

If licence classes are used at a site, it is entirely up to the administrator which class a licence token must belong to.

If the tokens have different modules, it is bad practice to put more than one token in a licence class. If this happens, the user can never be certain what modules they will be licenced to use. If you have more than one token for a single product version, they must be put into separate licence classes.

See also

- See "Changing a token class" on page 18