



## Installing Licence Manager for Surpac

Version 6.6  
June 13

**Copyright © Dassault Systèmes GEOVIA Inc.**

All rights reserved. Dassault Systèmes GEOVIA Inc. publishes this documentation for the sole use of GEOVIA product licensees.

Without written permission, you may not sell, reproduce, store in a retrieval system, or transmit any part of this documentation. For such permission, or to obtain extra copies please contact your local GEOVIA office, or visit [www.3ds.com/GEOVIA](http://www.3ds.com/GEOVIA).

This software and documentation is proprietary to Dassault Systèmes GEOVIA Inc. and, except where expressly provided otherwise, does not form part of any contract. Changes may be made in products or services at any time without notice.

While every precaution has been taken in the preparation of this manual, neither the authors nor GEOVIA assumes responsibility for errors or omissions. Neither will be held liable for any damages caused or alleged to be caused from the use of the information contained herein.

Dassault Systèmes GEOVIA Inc. offers complete 3D software tools that let you create, simulate, publish, and manage your data.

GEOVIA, the GEOVIA logo, combinations thereof, and GEMS, Surpac, Minex, MineSched, Whittle, PCBC, InSite, and Hub are either trademarks or registered trademarks of Dassault Systèmes or its subsidiaries in the US and/or other countries.

**Product** GEOVIA Surpac 6.6

Last modified: Wednesday, 16 October 2013

# Table of Contents

<b>Introduction.....</b>	<b>4</b>
Requirements .....	4
<b>Install GEOVIA Licence Manager (SSILM).....</b>	<b>4</b>
Task: Installing Licence Manager.....	4
<b>Set up the Server.....</b>	<b>8</b>
Task: Set up the Server .....	8
<b>Set up the Client.....</b>	<b>12</b>
Task: Set up the Client.....	12

## Introduction

This document describes how to set up GEOVIA Licence Manager on a server computer, and how to connect to it from the Surpac client.

## Requirements

Before proceeding with this tutorial, you will need:

- Surpac 6.5 or later installed on your client computer (but not on the licence server computer).

## Install GEOVIA Licence Manager (SSILM)

### Task: Installing Licence Manager

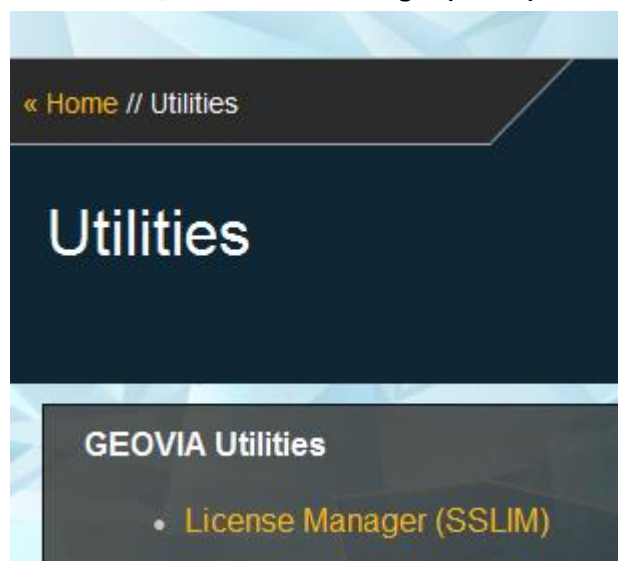
Do the following steps on the physical computer you want to use as the Licence server.

When you insert the Surpac installation CD, the install wizard appears.

1. From the first page of the installation wizard, click **Install Utilities**.

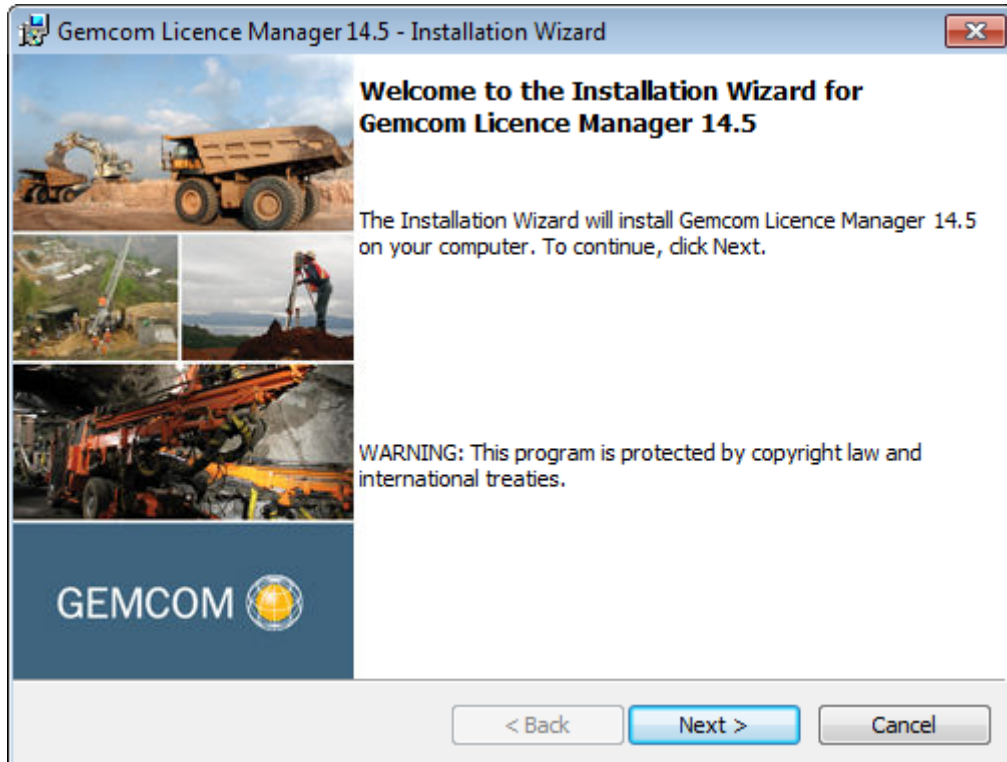


2. From the next screen, under **Utilities**, click **License Manager (SSILM)**.



**Note:** Make sure that the sentinel is NOT plugged in. The program will automatically install the sentinel driver and this requires that the sentinel not be attached.

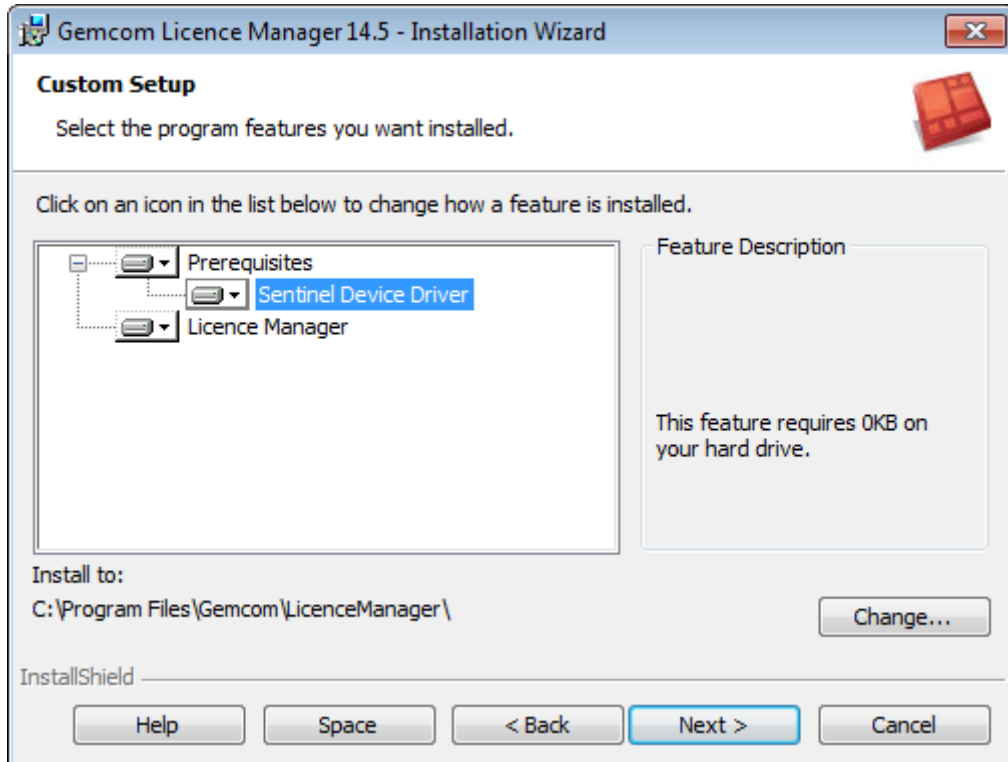
3. Click **Next**.



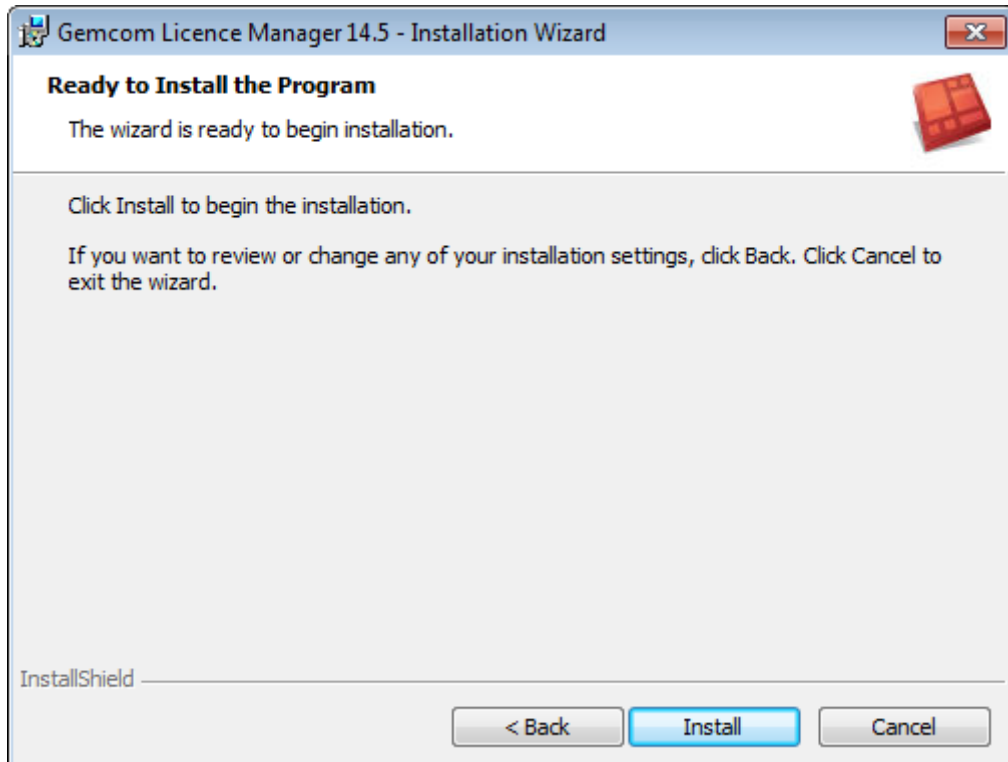
4. Click the button to accept the terms in the license agreement, and then click **Next**.



5. Make sure that the option to install the Sentinel Device Driver is selected, and then click **Next**.



6. Click **Install**.



7. Click **Finish** when the installation is complete.



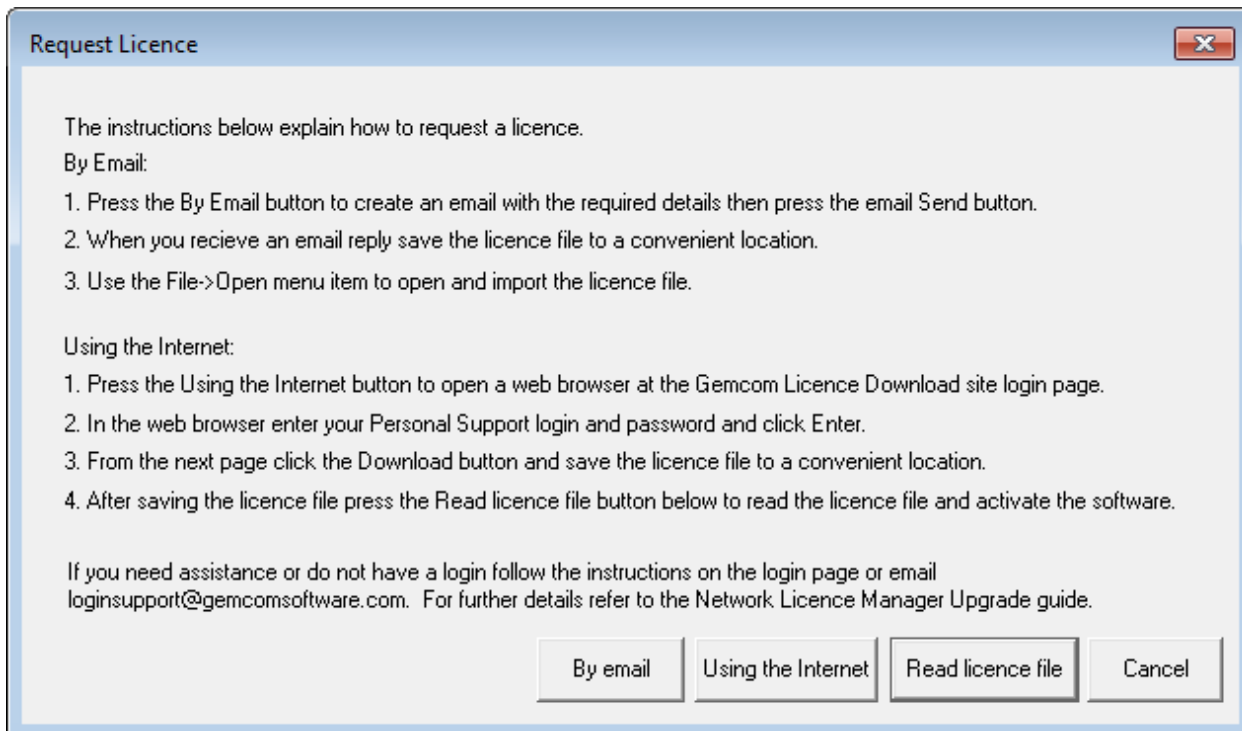
When the installation is complete, a new icon appears on the desktop.



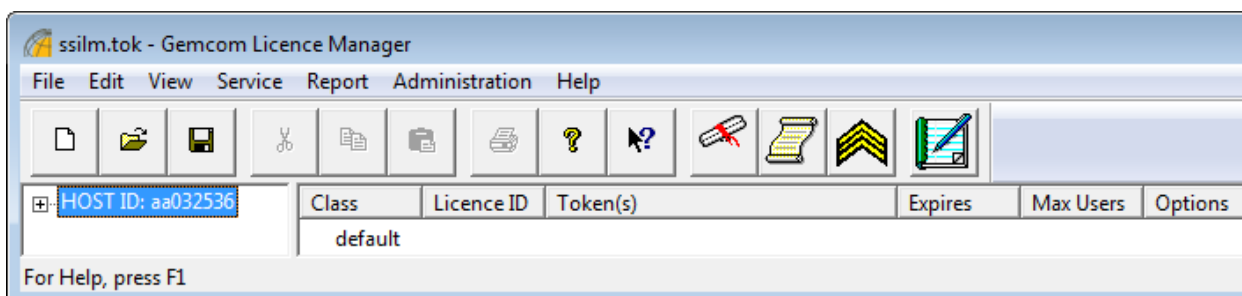
## Set up the Server

### Task: Set up the Server

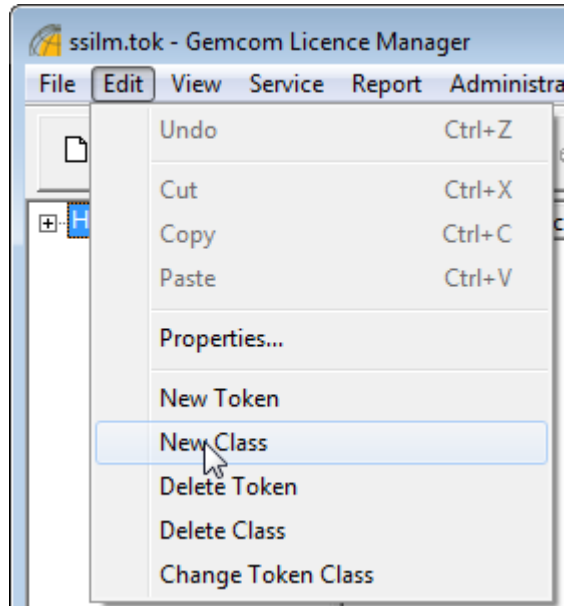
1. Insert the sentinel into the USB port on the server machine.
2. Double-click the icon to start Licence Manager.  
You are prompted to get a licence file.



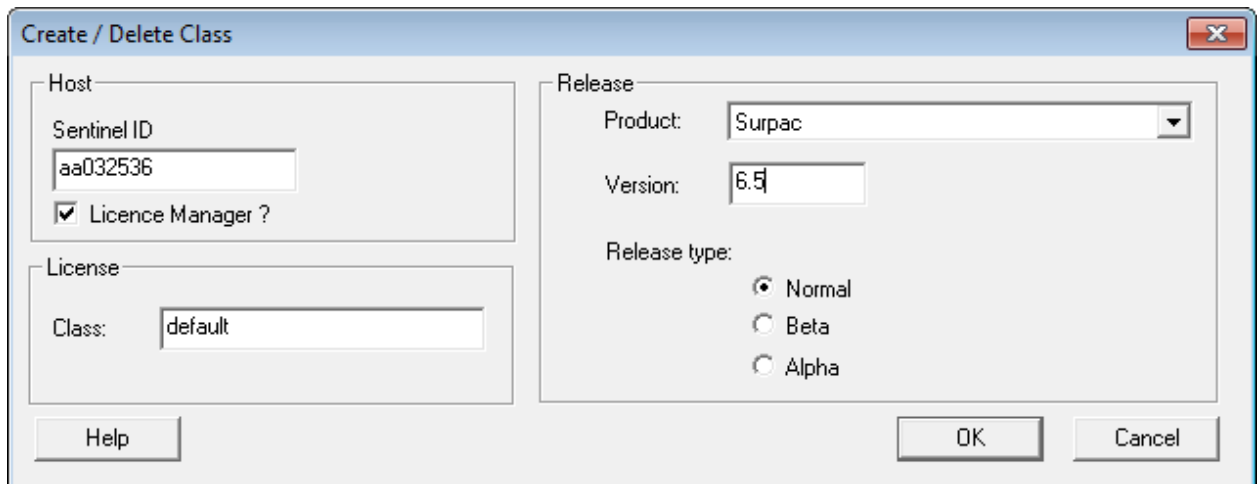
3. If you do not have a licence file already, follow the instructions to get the file, either by email or using the Internet.
4. When you have got a licence file, click **Read licence file**, browse to the licence (.udt) file, and click **Open**.  
There is also a manual method of loading licence file details that is described in the next step.
5. If Read licence file fails for any reason, load the licence details manually, by doing the following:  
In the left- pane you will see the sentinel number (HOST ID)



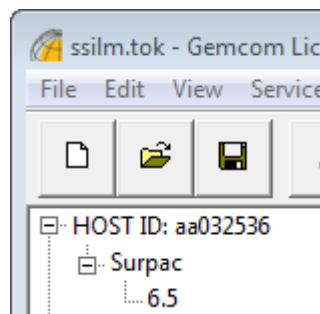
- a) Choose **Edit > New Class**.



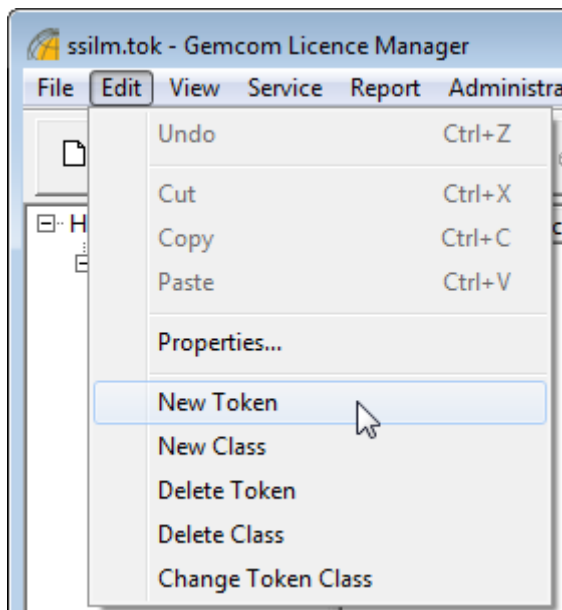
- b) Enter the **Product** and **Version** number in the Class form, and then click **OK**.

A screenshot of the 'Create / Delete Class' dialog box. The 'Host' section contains 'Sentinel ID' with the value 'aa032536' and a checked 'Licence Manager?' checkbox. The 'License' section contains 'Class:' with the value 'default'. The 'Release' section contains 'Product:' with a dropdown menu showing 'Surpac', 'Version:' with the value '6.5', and 'Release type:' with radio buttons for 'Normal' (selected), 'Beta', and 'Alpha'. Buttons for 'Help', 'OK', and 'Cancel' are at the bottom.

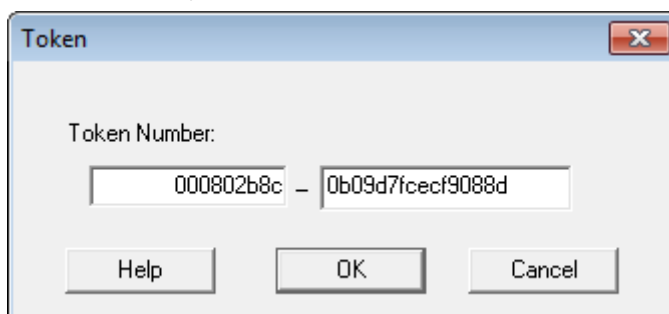
The product and version number are displayed in the left pane.



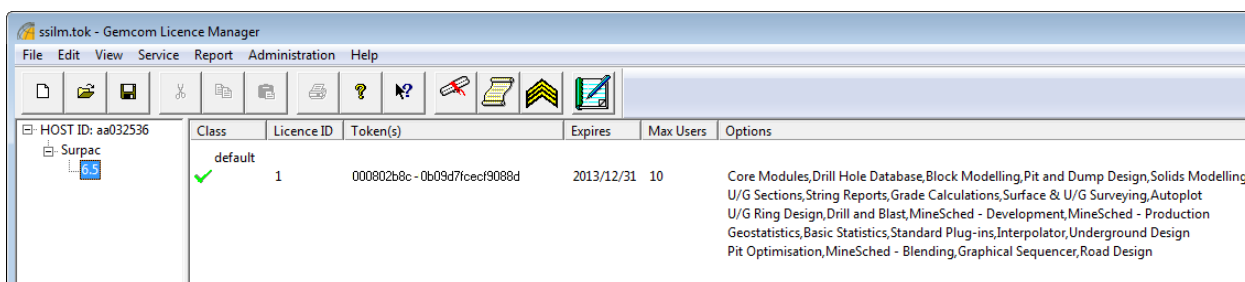
c) Choose **Edit > New Token**.



d) Insert the provided token number, and click **OK**



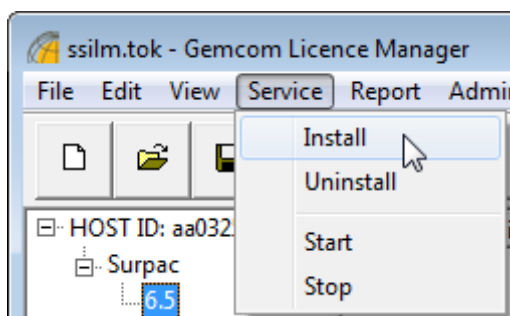
You will see information in the right-hand pane, including the maximum number of users and a list of modules enabled.



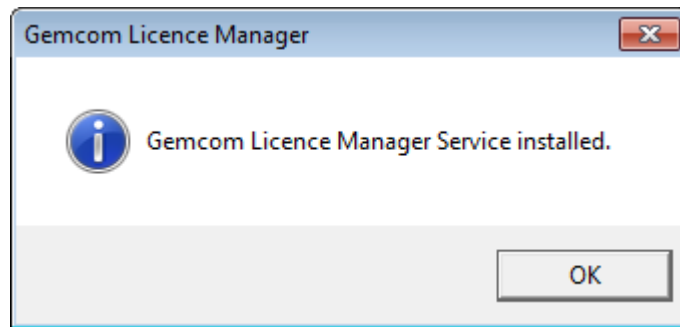
6. Choose **Service > Install**.

This will install a Windows service that will automatically start when the computer is rebooted.

Notice that the server status in the in the status bar changes to **Installed**.



You will see the following confirmation form.

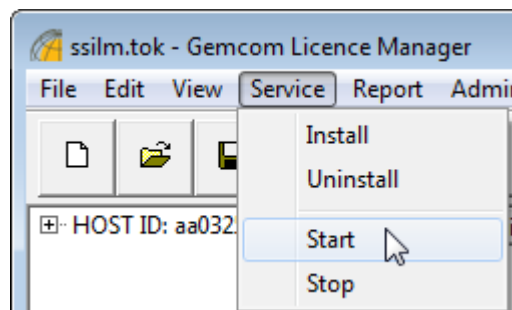


7. Click **OK**.

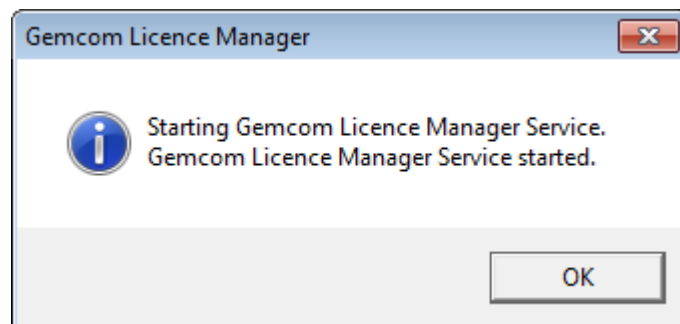
8. Choose **Service > Start**.

The GEOVIA Licence Manager service starts immediately. The service will automatically start when the server machine is restarted from now on.

Notice that the server status in the status bar changes to **Started**.



You will see the following confirmation form.



9. Click **OK**.

10. Choose **File > Save** to save the token settings.

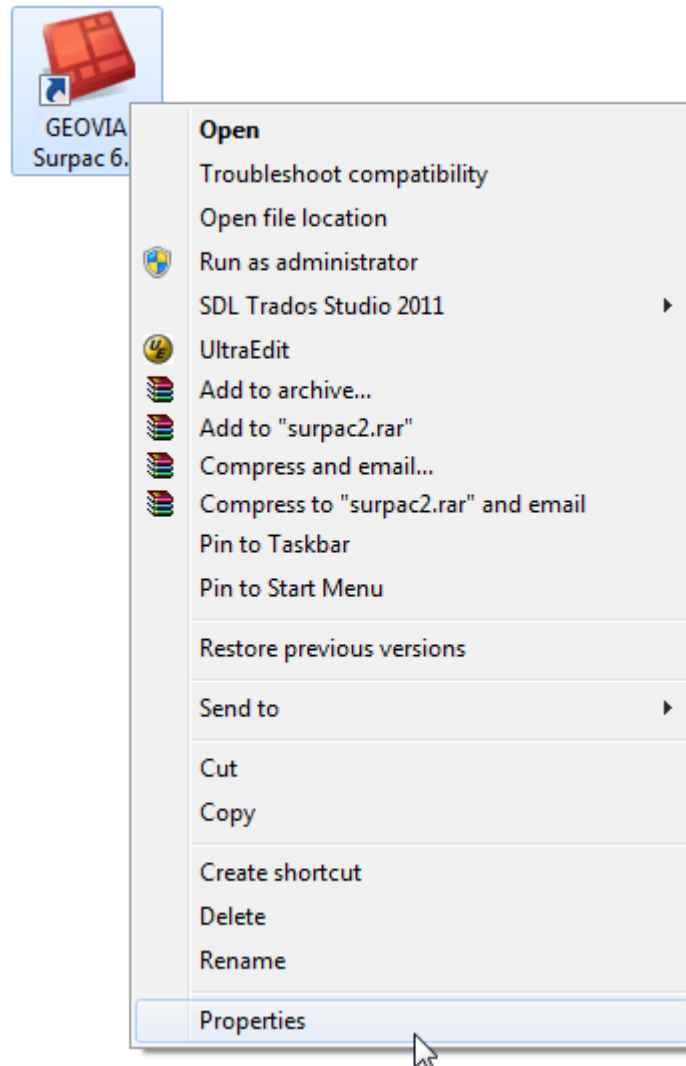
This completes the setup on the server computer.

## Set up the Client

### Task: Set up the Client

By doing these steps, you configure Surpac on the client computer to find a specific licence manager. If you do not do these steps, Surpac will try to find a licence server running on your network, but it will not use any specific licence class.

1. Right-click on the Surpac icon on the desktop and choose **Properties**.



2. In the properties form, append the following text to the **Target**.  
`-lm nnn.nnn.nnn.nnn -class xxxx`  
where `nnn.nnn.nnn.nnn` is either the IP address of the server computer or the computer name and `xxxx` is the class name.
3. Click **OK**

When you double click the Surpac icon, Surpac will look for the server computer and try to obtain a licence from the Licence Manager.

